

WHY **T5** DUBLIN



Located at the physical and logical nexus between EMEA and North America, Ireland and specifically Dublin data centers provide a critical link in global commerce. T5@Dublin data center campus is located immediately adjacent to the GTT EMEA NOC and sits upon the T50 fiber ring around Dublin which connects all major hyperscale and enterprise computing environments connecting your business needs with your clients.

Delivering up to 20MW of critical IT load capacity across three interconnected buildings, T5@Dublin provides flexibility, security, and scalability for a wide range of enterprise or hyperscale needs.

Having developed over 4 million square feet of data center space and currently operating over 600 MW of critical load across 55 data centers in North America and Europe, T5 is proud to offer its proven life-cycle services platform to Ireland's most important data center market. T5 is committed to hiring veterans, our processes and procedures are based on military-proven methods for critical facilities.

LOCATION ATTRIBUTES

Strategically located in Clonsaugh, 5 miles from the heart of Dublin City (Silicon Docks), T5@Dublin sits 3 miles from Dublin airport with easy access to the M1 and M50 motorways. This central location provides unparalleled access, robust connectivity to IXPs and sub-sea cables, and ease of doing business.

Additionally, T5@Ireland has pre-procured and allocated utility power along with a favorable data center zoning precedence, thus mitigating future expansion risk.

SPECIFICATIONS

Building

20.0 CMW Data Center Campus

Available Q3 2021

Phase I - 8.0MW / (4) 1,161 SqM (12,500SF)

Data Halls

Future Expansion

Phase II - 8.0MW / (4) 1,161 SqM (12,500SF)

Data Halls

Phase III - 4.0MW / (2) 1,239 SqM (13,336SF)

Data Halls

Power

Dual power feeds from 38 kV ESB substation with initial power allocation in hand

Highly efficient mechanical system produces consistently low PUE values and is scalable for future density growth

Block redundant, N+1 electrical topology provides concurrent maintainability and fault tolerance with dedicated infrastructure possibilities

Connectivity

Robust fiber connectivity with diverse pathways to whitespace and ability to interconnect buildings

GTT's EMEA NOC is located directly opposite the site and Clonsaugh is diversely connected to the T50 fiber ring, interconnecting all of the main data center facilities and Telecom carriers to all main sub-sea cables

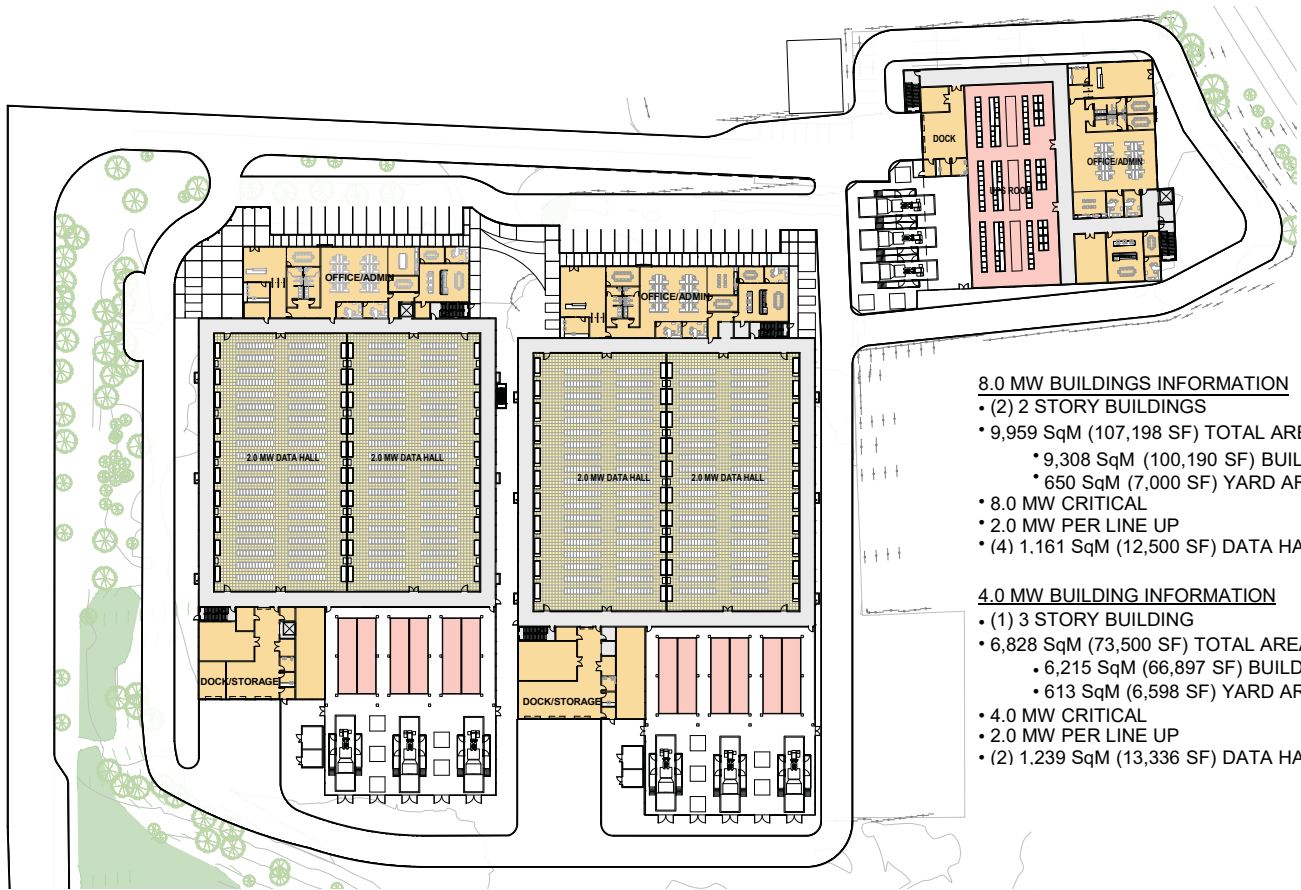
Security

24/7 on-site guards

2-factor authentication and biometric access

Proven 24/7/365 critical facility operations team mitigates outage risks before they occur

T5 DUBLIN CAMPUS PLAN



8.0 MW BUILDINGS INFORMATION

- (2) 2 STORY BUILDINGS
- 9,959 SqM (107,198 SF) TOTAL AREA
 - 9,308 SqM (100,190 SF) BUILDING AREA
 - 650 SqM (7,000 SF) YARD AREA
- 8.0 MW CRITICAL
- 2.0 MW PER LINE UP
- (4) 1.161 SqM (12,500 SF) DATA HALLS

4.0 MW BUILDING INFORMATION

- (1) 3 STORY BUILDING
- 6,828 SqM (73,500 SF) TOTAL AREA
 - 6,215 SqM (66,897 SF) BUILDING AREA
 - 613 SqM (6,598 SF) YARD AREA
- 4.0 MW CRITICAL
- 2.0 MW PER LINE UP
- (2) 1.239 SqM (13,336 SF) DATA HALLS

**TO LEARN MORE ABOUT T5 OR T5@DUBLIN, VISIT
T5DATACENTERS.COM OR CONTACT THE T5 TEAM TODAY!**

Tim Bright

✉ tbright@T5datacenters.com

☎ +1 404 451 0175

Mark Devereux

✉ mdevereux@T5datacenters.com

☎ +353 87 234 5676

T5 goes beyond the data center, offering a transformative approach that includes Data Center Development, Critical Construction Services, Facility Management and more for enterprise and hyperscale cloud customers across North America and Europe. **T5 is committed to exceeding the needs and expectations of its customers delivering scalable solutions that provide a 'Forever On' environment. As a leading full lifecycle data center services provider, T5's bespoke solutions feature robust designs, reliable power and telecommunications, and a 24-hour staff to support mission-critical facility needs.**

🌐 [T5datacenters.com](https://www.T5datacenters.com)

✉ info@T5datacenters.com

☎ +1 404 239 7140