



# T5DataCenters™

Forever On.



T5 Data Centers offers T5@NewYork, an existing enterprise-grade data center shell available for customized design and built-out as an ideal primary, disaster recovery or data mirroring location. T5 will fund all MEP improvements to transform the facility to a new, purpose-built data center for the enterprise user. Providing easy access to New York City but outside of Manhattan and away from flood zones, T5@NY offers businesses ranging from healthcare and financial services to trading, and technology firms a unique data center solution with extraordinary design flexibility.

T5@NY is located in the heart of New York's Hudson Valley, which contains the largest biotechnology workforce in the state of New York. Permitted for both data center or lab uses, T5@NY can serve as excellent lab or incubator space complementing such premier Westchester County medical and research institutions as the New York Medical College, Phelps Memorial Hospital, Cornell and Westchester Medical Center.

#### LOCATION

- + 600 Albany Post Road, Briarcliff Manor, New York
- + 30 Miles north of Grand Central Terminal
- + Westchester County Businesses Include:
  - New York Life, IBM, MasterCard, PepsiCo, Dannon USA

#### FACILITY

- + 38,000 SF Building (Expandable)
- + 9.4 Acres Land
- + Powered Shell or Server Ready Turnkey
- + Zoned Data Center or Lab Use

#### UTILITIES

- + Service provided by ConEd
- + Existing 2 MW capacity expandable to 4.25 MW
- + Additional utility feeders available at no additional cost

#### TELECOM & FIBER

- + ATT
- + Verizon
- + Lighttower

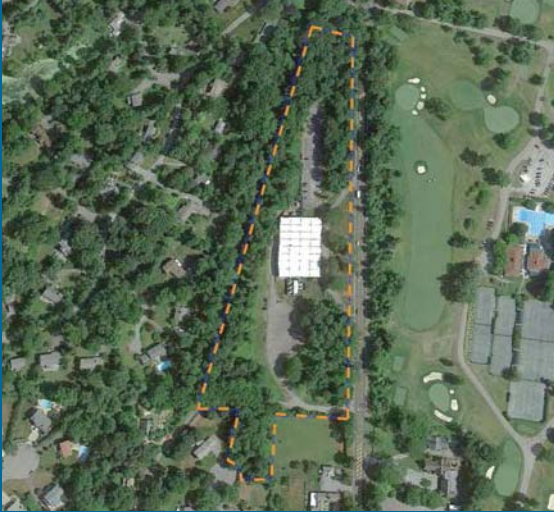
**CONTACT:** Jason Chartrand o. 404.239.7144 c. 404.993.5996 jchartrand@t5datacenters.com  
Craig McKesson o. 312.772.4804 c. 404.543.0888 cmckesson@t5datacenters.com

**T5 Data Centers**  
3344 Peachtree Rd., NE, Suite 2550  
Atlanta, GA 30326  
[www.t5datacenters.com](http://www.t5datacenters.com)





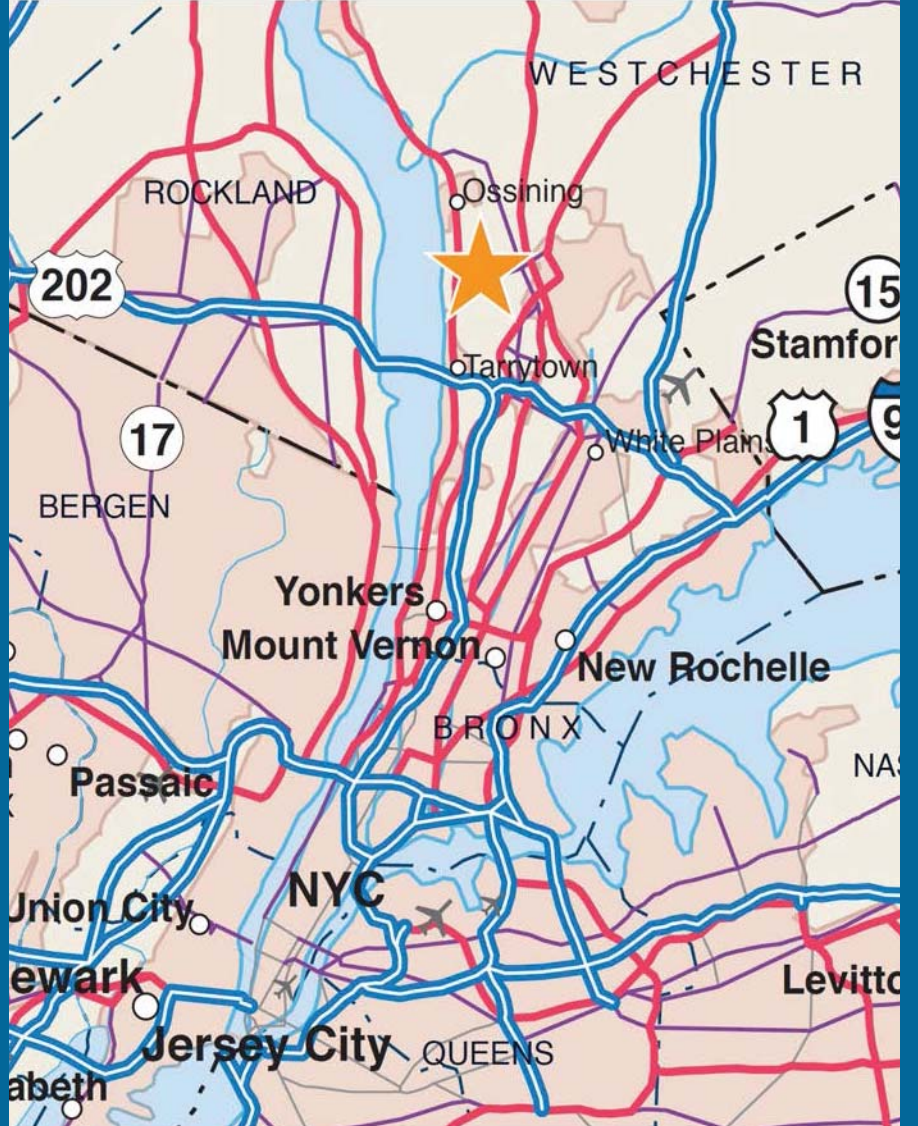
## T5@NY



### DATA CENTERS IN THE AREA



## Location



T5 builds, owns and operates server-ready single and multi-tenant data centers across the globe to meet the demands of today's corporate users. We provide our customers with proven, state-of-the-art data centers in a scalable format that are built, maintained and operated to ensure you never again have to worry if your mission critical applications are running.

As a result of our rapid expansion and robust, flexible design criteria, we are constantly positioning ourselves to meet the diverse and discriminating demands of the world's top companies and stand committed to our principles of delivering the facilities, operational expertise and data center management and services that exceed our customers' expectations today and grow with them into the future.

## T5 Global Data Center Portfolio



**CONTACT:** Jason Chartrand o. 404.239.7144 c. 404.993.5996  
 Craig McKesson o. 312.772.4804 c. 404.543.0888

jchartrand@t5datacenters.com  
 cmckesson@t5datacenters.com

**T5 Data Centers**  
 3344 Peachtree Rd., NE, Suite 2550  
 Atlanta, GA 30326  
 www.t5datacenters.com

